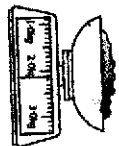


Assessment Book

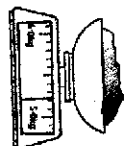
Topic Assessment Weight 9

Number

1 Write each weight in grams, to the nearest 100 g.

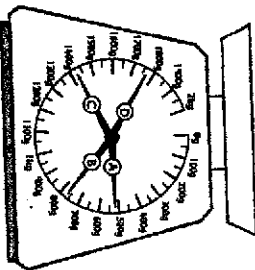


2100 g



4800 g

2 Write each weight in kilograms, to the nearest $\frac{1}{10}$ kg.



- (A) $\frac{5}{10}$ kg
- (B) $\frac{8}{10}$ kg
- (C) $1\frac{4}{10}$ kg
- (D) $1\frac{8}{10}$ kg

3 Write each weight in grams or in kilograms and grams.

6 kg 105 g → 6105 g 2357 g → 2 kg 357 g
 5096 g → 5 kg 96 g 4 kg 213 g → 4213 g

7 A double-decker bus weighs 10 tonnes 500 kg. Fourteen adults together weigh about 1 tonne. What is the approximate total weight of the bus and its passengers in tonnes? 14 $\frac{1}{2}$ tonnes

63

- 1 (a) 0.7 kg, 700 g (b) 0.1 kg, 100 g
 (c) 1.7 kg, 1700 g (d) 2.5 kg, 2500 g

- 2 A 100 g, 0.1 kg E 300 g, 0.3 kg
 B 600 g, 0.6 kg F 900 g, 0.9 kg
 C 1000 g, 1 kg G 1300 g, 1.3 kg
 D 1600 g, 1.6 kg H 1900 g, 1.9 kg
 I 900 g, 0.9 kg

(P7 ONLY)
Answers

- 3 Pupil's own answers.
 4 Pupil's own answers.

63

1 Pupil's own answers.

2 Pupil's own answers.

- 3 (a) 1250 g (b) 3125 g (c) 4568 g (d) 2379 g
 4 (a) 5 kg 482 g (b) 7 kg 634 g (c) 9 kg 513 g (d) 6 kg 747 g
 5 (a) 7132 g (b) 8 kg 716 g (c) 4303 g (d) 6 kg 948 g
 (e) 1255 g (f) 5 kg 681 g (g) 2569 g (h) 9 kg 74 g

70

1 (a) 11 950 kg (b) 34 750 kg (c) 4500 kg

2 (a) 5 tonnes 900 kg (b) 3 tonnes 300 kg (c) 13 tonnes 950 kg

3 Weight of passengers is 3×1 tonne = 3 tonnes = 3000 kg
 Weight of bus = 8 tonnes 500 kg = 8500 kg
 Total weight = 11 500 kg

4 Weight of truck 5 tonnes
 4 bags of gravel 2 tonnes
 100 paving slabs 2 tonnes
 20 sleepers 1 tonne 800 kg
 Total weight 10 tonnes 800 kg

5 Practical work: