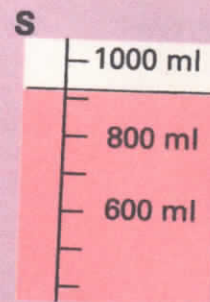
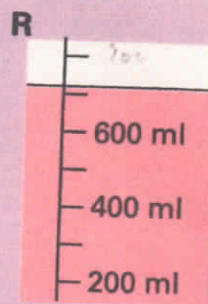
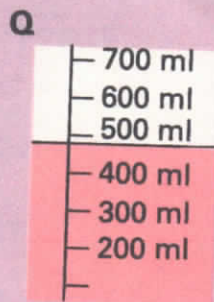
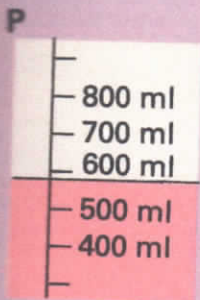
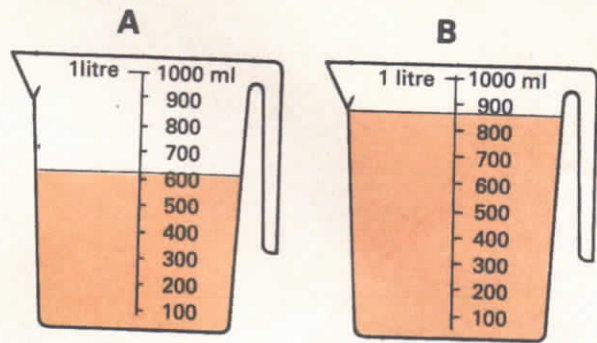


Reading to the nearest mark

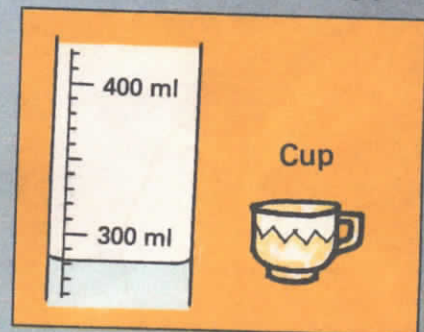
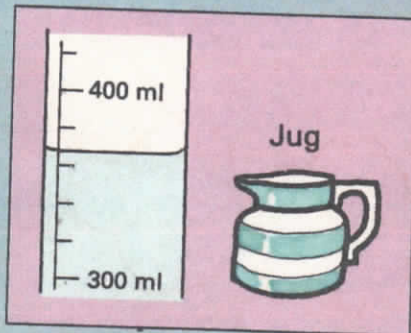
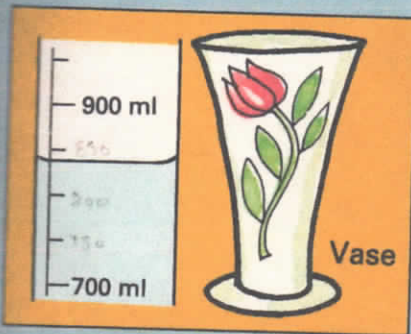
1 Copy and complete these sentences for each jug:

- (a) Jug A holds more than _____ ml and less than _____ ml.
 (b) Jug B holds less than _____ ml and more than _____ ml.



2 The volume in container P is 600 ml to the nearest 100 ml. Write the volumes in containers Q, R, and S to the nearest 100 ml.

3 Read the volumes of these containers which have been emptied into the measuring jars:



- (a) to the nearest 50 ml, (b) to the nearest mark, (c) to the nearest mark.

4 Ask for the small containers.

- (a) Fill one container with water. Pour the water into a measuring jar. Write the volume of the container using 'to the nearest'.
 (b) Do this again for the other containers.

