

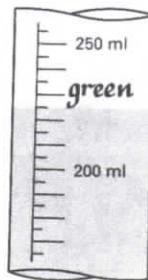
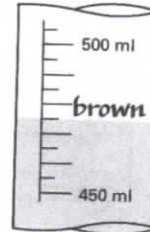
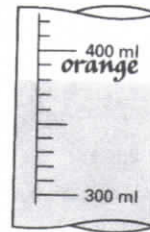
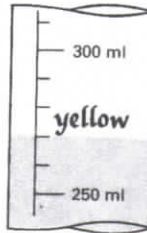
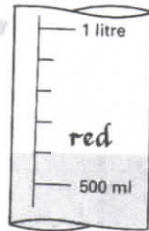
Soup cocktail

1 These soups are mixed to make a cocktail.

600 ml tomato	(red)
380 ml mushroom	(orange)
270 ml potato	(yellow)
475 ml oxtail	(brown)
225 ml pea	(green)



(a) Choose the most suitable scale and colour it to show the volume of each soup.



(b) Calculate the total volume of the soup cocktail. Write the total volume in two different ways.

1950 ml

1 litre 950 ml (or 1.950 litres)

(c) The soup cocktail is shared equally among 5 lumshies. What volume does each get?

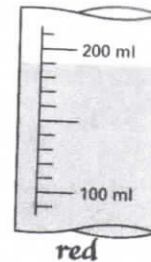
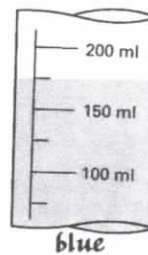
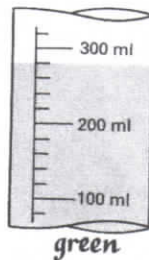
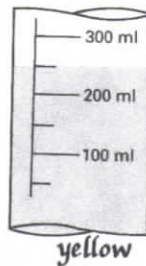
390 ml

(d) Is each share more or less than $\frac{1}{2}$ litre?

less than $\frac{1}{2}$ litre

2 Choose the **most suitable** scale and colour it to show each of these volumes:

190 ml (red) 250 ml (yellow) 175 ml (blue) 280 ml (green)



Go back to Textbook Page 94, question 6.