

Reading and pouring volumes

Remember: 1 litre = 1000 ml = 1000 cm³

- (a) Perfume 45 cm³
- (b) Shampoo 150 ml
- (c) Fresh air 175 cm³
- (d) Oil 100 ml
- (e) Washing up liquid 500 ml

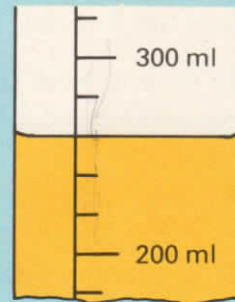
1 The volumes of these containers are given in different ways. Write each volume in another way.



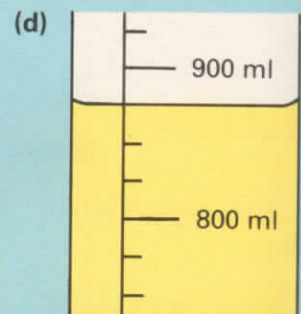
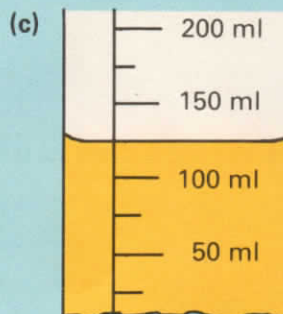
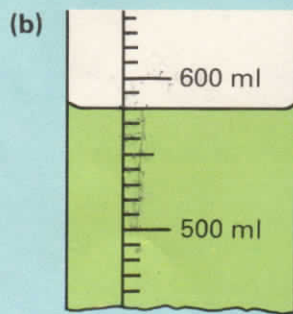
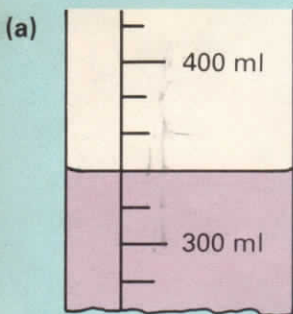
2 Start a class collection of containers where volumes are shown. For each container, label the volume in another way.

3 Measuring jars can have different scales. This diagram shows part of a measuring jar.

- (a) How many small intervals are there between the 200 ml and 300 ml marks?
- (b) What volume does each small interval represent?
- (c) What volume of liquid is shown in this jar?



4 What volume of liquid is shown in each of these jars?



W 5 Do Workbook Page 34.

6 When measuring the volume of liquid in a measuring jar, make sure your **eye** is level with the surface of the liquid.

You need a cup, a mug, and measuring jars.

- (a) Measure out 250 ml of water. Find out if this is more than, less than, or about the same volume as, a mugful.
- (b) Measure out 180 ml of water. Find out if this is more than, less than, or about the same volume as, a cupful.

