

Hurricane Irma Question Cards

1. Hurricane Irma was one of the _____ storms to hit the US.

a fastest

b strongest

c largest

d smallest

Hurricane Irma Question Cards

2. Hurricane Irma hit the Caribbean on...

a September 13th

b September 8th

c September 6th

d September 25th

Hurricane Irma Question Cards

3. Which of the following places was not hit by Irma?

a Barbuda

b Cuba

c Florida

d California

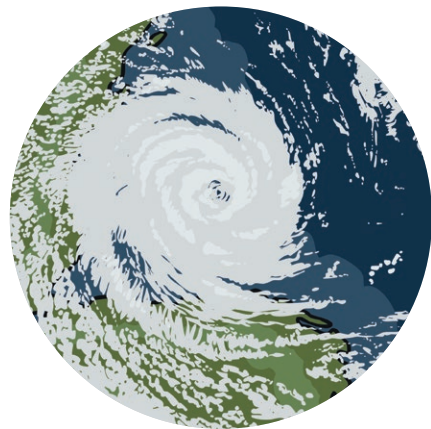
4. According to the text, what does 'evacuate' mean?

- a** shelter-in-place
- b** board up your windows
- c** visit your friends and family
- d** find safer places to ride out the storm

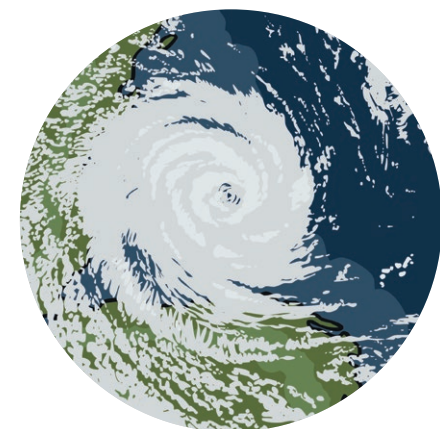
5. How might you stay safe during a storm like Irma?

- a** board up your windows
- b** place sand bags around your property
- c** evacuate
- d** all of the above

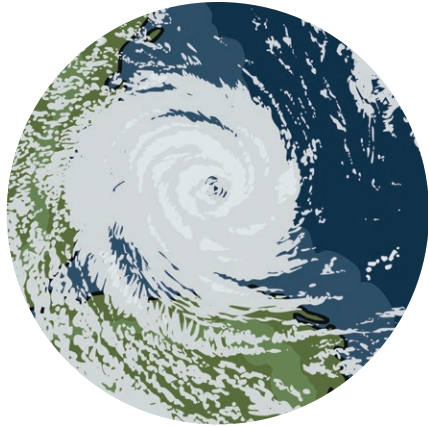
6. Which is stronger? A tropical storm or a hurricane? How do you know?



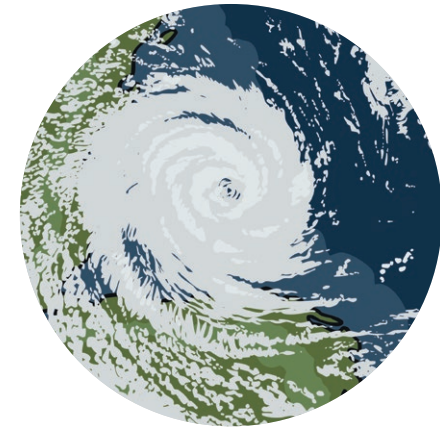
7. Why might some people choose to shelter-in-place during a storm?



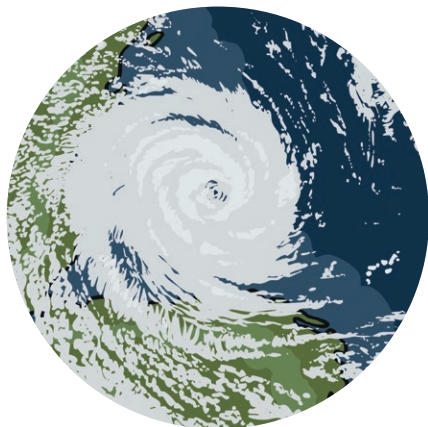
8. How does boarding your windows help protect you during a storm?



9. How big was Hurricane Irma?



10. Why do you think people have to take care when cleaning debris from their yard after storms like Hurricane Irma?



Answers

1. C
2. C
3. D
4. D
5. D
6. A hurricane. Irma was "downgraded" to a tropical storm.
7. Answers will vary: People don't want to leave their homes, they can't evacuate, they are sick or don't have a car.
8. Boarding windows protects against the wind breaking the glass in the window.
9. Irma was over 400 miles wide.
10. Answers will vary: People must be sure to use gloves, long pants, or wear goggles to protect their skin and eyes from sharp or dangerous objects.