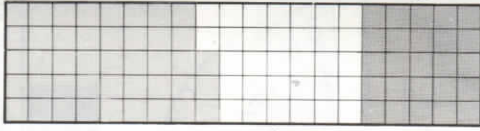
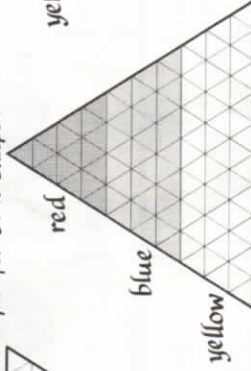
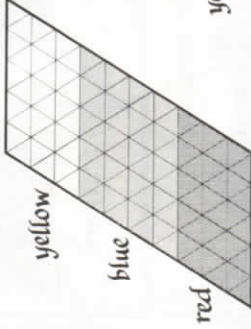


Colouring different percentages

- 1 Each of these shapes is divided into 100 equal parts.
 (a) For each shape colour the percentages shown in the table.

Shape	red	blue	yellow	Total percentage coloured
Parallelogram	30%	40%	30%	100%
Triangle	16%	33%	51%	100%
Rectangle	25%	43%	32%	100%

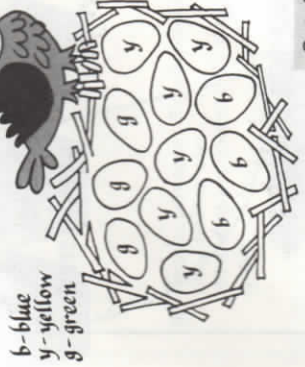
There are many correct ways to colour the shapes.
 Here is one example for each shape:



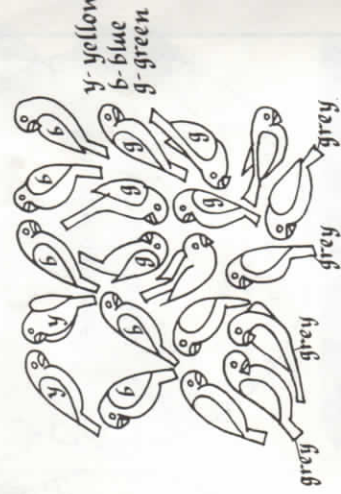
- (b) Complete the table.

- 2 Go back to Textbook Page 112, question 4.

- 3 (a) How many eggs has the Great Oozle? 12
 (b) Colour 25% of the eggs blue, 50% yellow, and the rest green.
 (c) What percentage of the eggs are green? 25%



- 4 (a) How many budgies are there? 20
 (b) Colour 10% of the budgies yellow, 25% blue, 25% green, and 20% grey.
 (c) What percentage of the budgies are white? 20%



Go to Textbook Page 113.