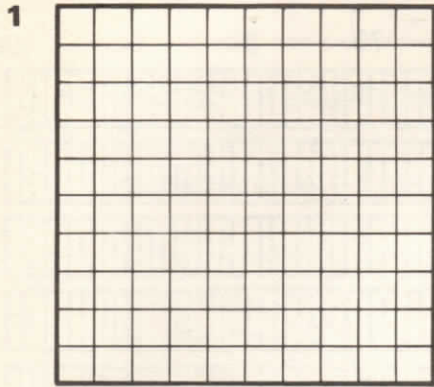


Colouring percentages

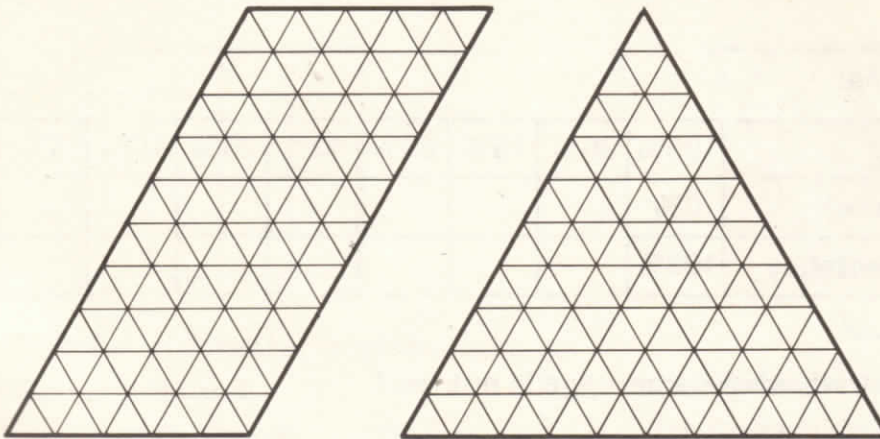
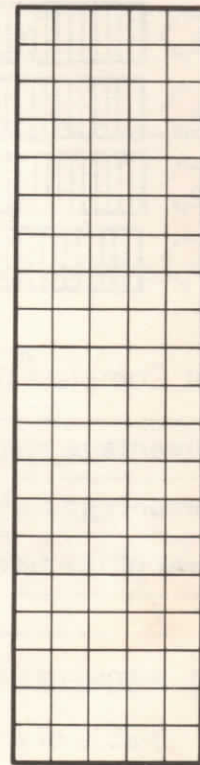
Each shape on this page has been divided into 100 equal parts.



- (a) Complete: 20% means out of 100 or $\frac{\text{input}}{100}$.
- (b) Colour 20% of the shape red.
- (c) Complete: 30% means out of 100 or $\frac{\text{input}}{100}$.
- (d) Colour 30% of the shape blue.
- (e) What percentage is **not** coloured? _____

2 (a) For each shape, colour the percentages shown in the table.

Shape	red	yellow	blue	not coloured
Parallelogram	20%	30%	40%	
Triangle	25%	39%	17%	
Rectangle	45%	15%	27%	

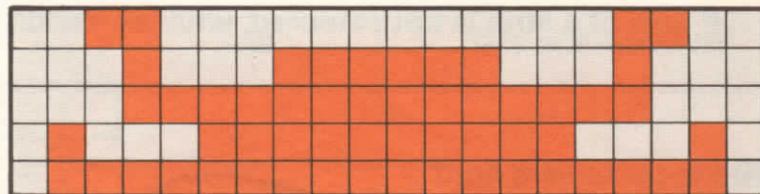


(b) Complete the table to show what percentage of each shape is **not** coloured.

3 Complete:

_____ % is coloured orange.

_____ % is coloured grey.



4 Use coloured pencils to make a design on this shape. Write about it. You could begin like this:

'I coloured _____ % red.'

